



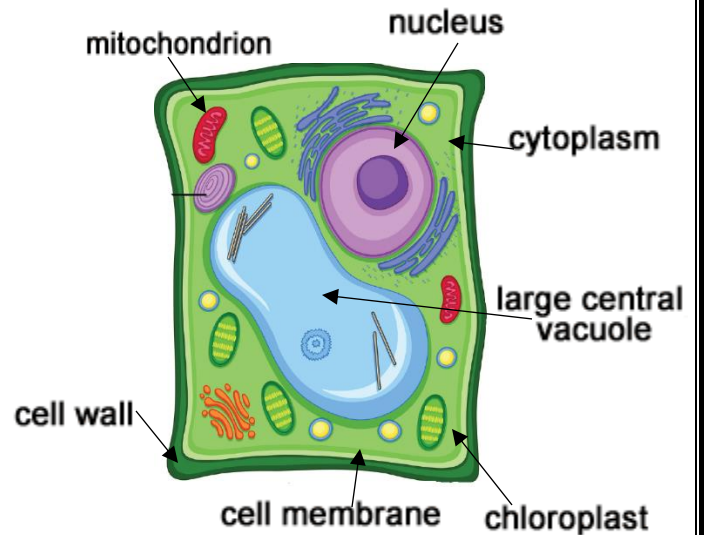
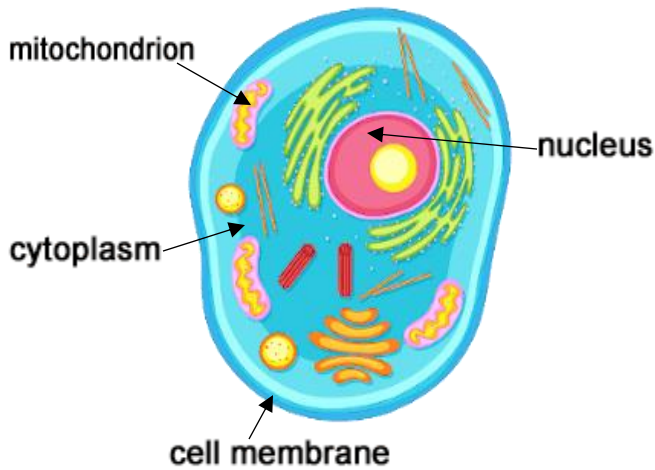
Name \_\_\_\_\_

---

# Cells

Animal  
cell

Plant  
cell



## Difference between plant and animal cells

<b>Cell structure</b>	<b>Function</b>	<b>In plant cell?</b>	<b>In animal cell?</b>
Cell membrane	controls the exchange of material between the cell and its surroundings	Yes	Yes
Nucleus	Contain DNA arranged in chromosomes ,control the activities of the cell	Yes	Yes
Cytoplasm	Jelly-like substance where chemical reactions of the cell occur	Yes	Yes
Cell wall	Made from Cellulose protect the cell and give its shape	Yes	No
Chloroplast	Contains chlorophyll which helps the plant to produce food by process called photosynthesis	Yes	No

