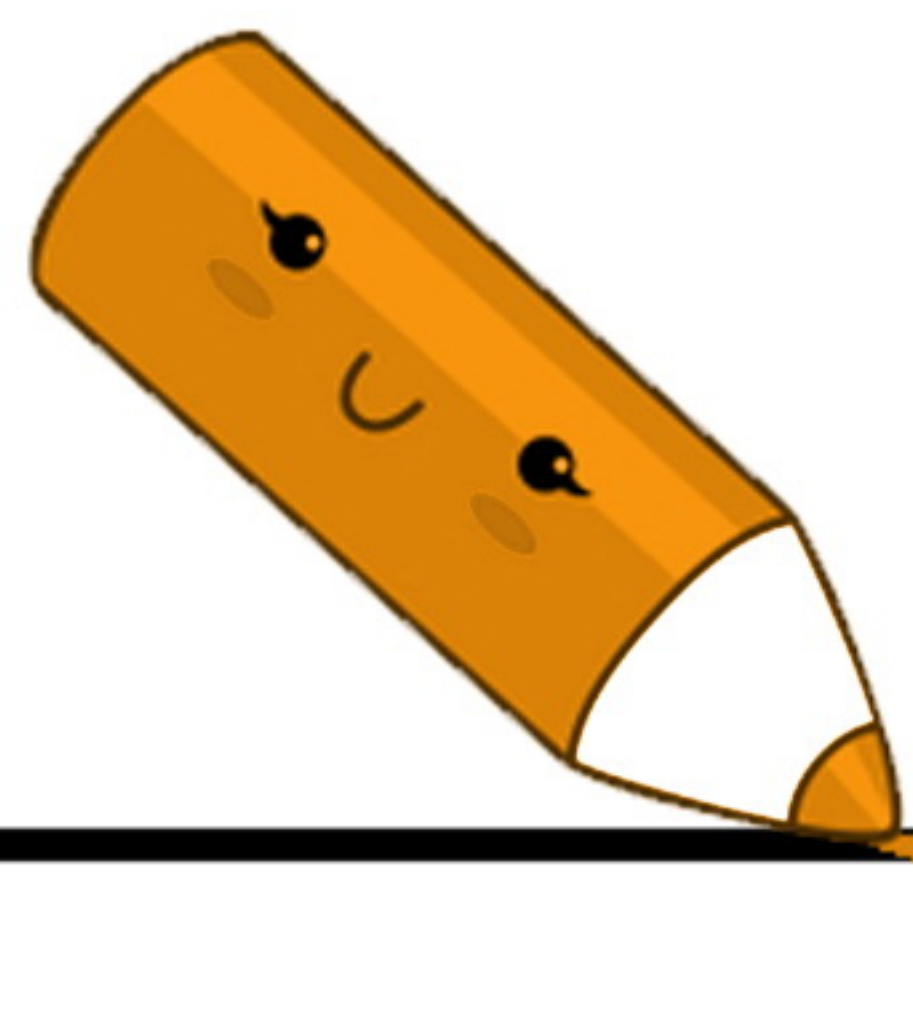




ألوان حروف

ح



AWAZEL
LEARN 2 BE

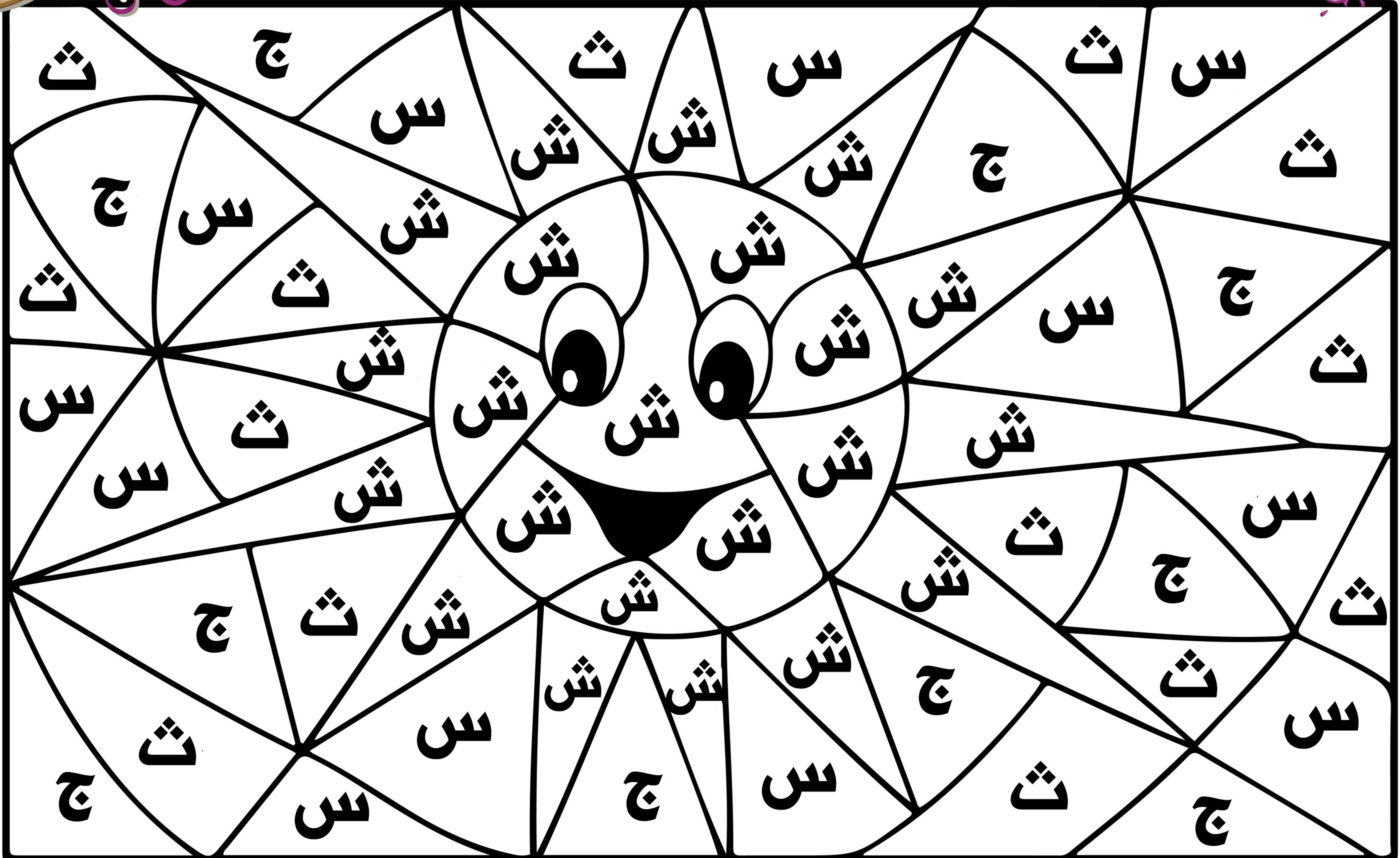
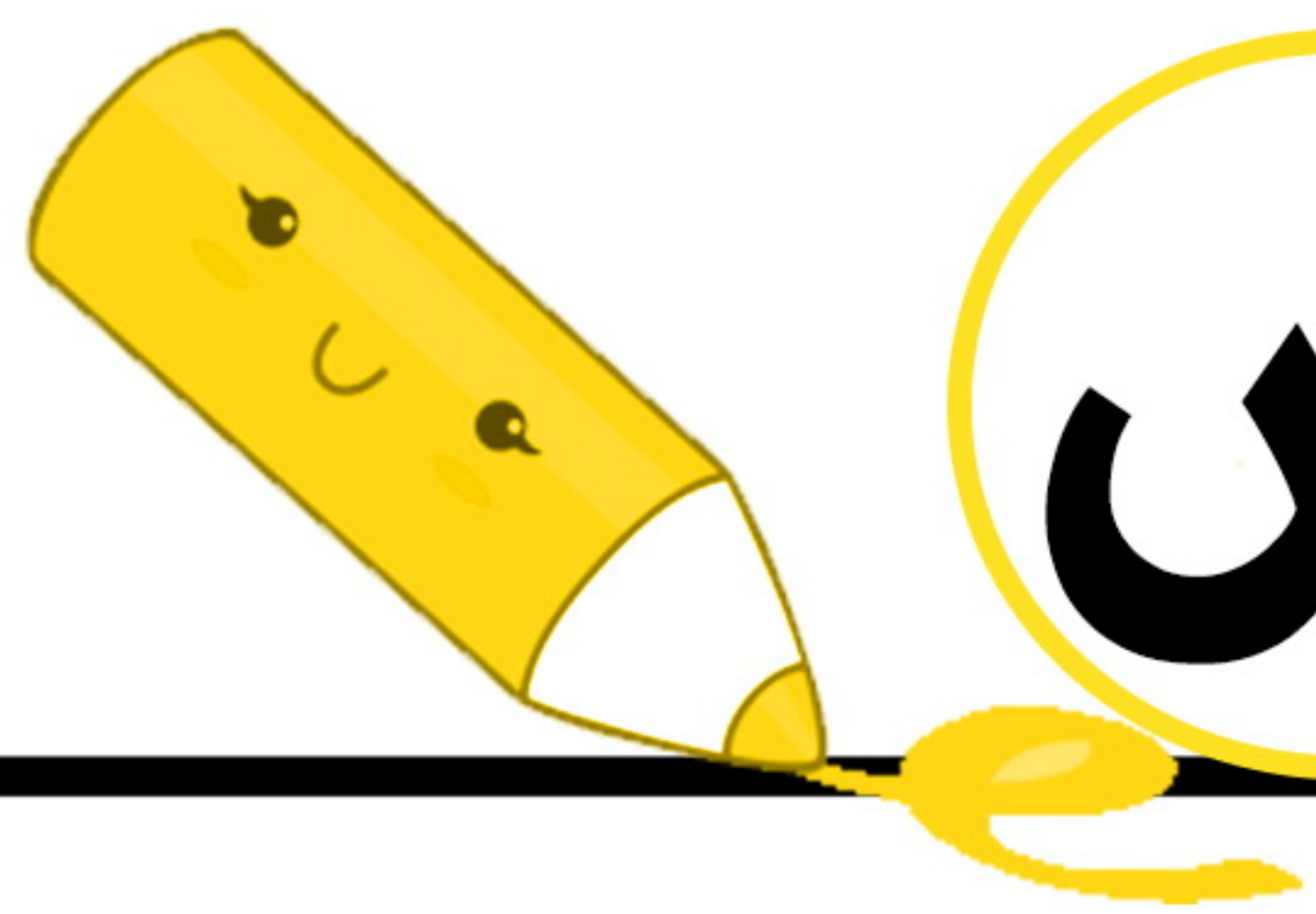


A large rectangular area containing a complex pattern of overlapping circles and lines. The pattern is filled with the Arabic letter 'ح' (Ha) in various orientations and sizes. In the center of the pattern, there is a small circular icon of a black and white yin-yang symbol.



ألون حروف

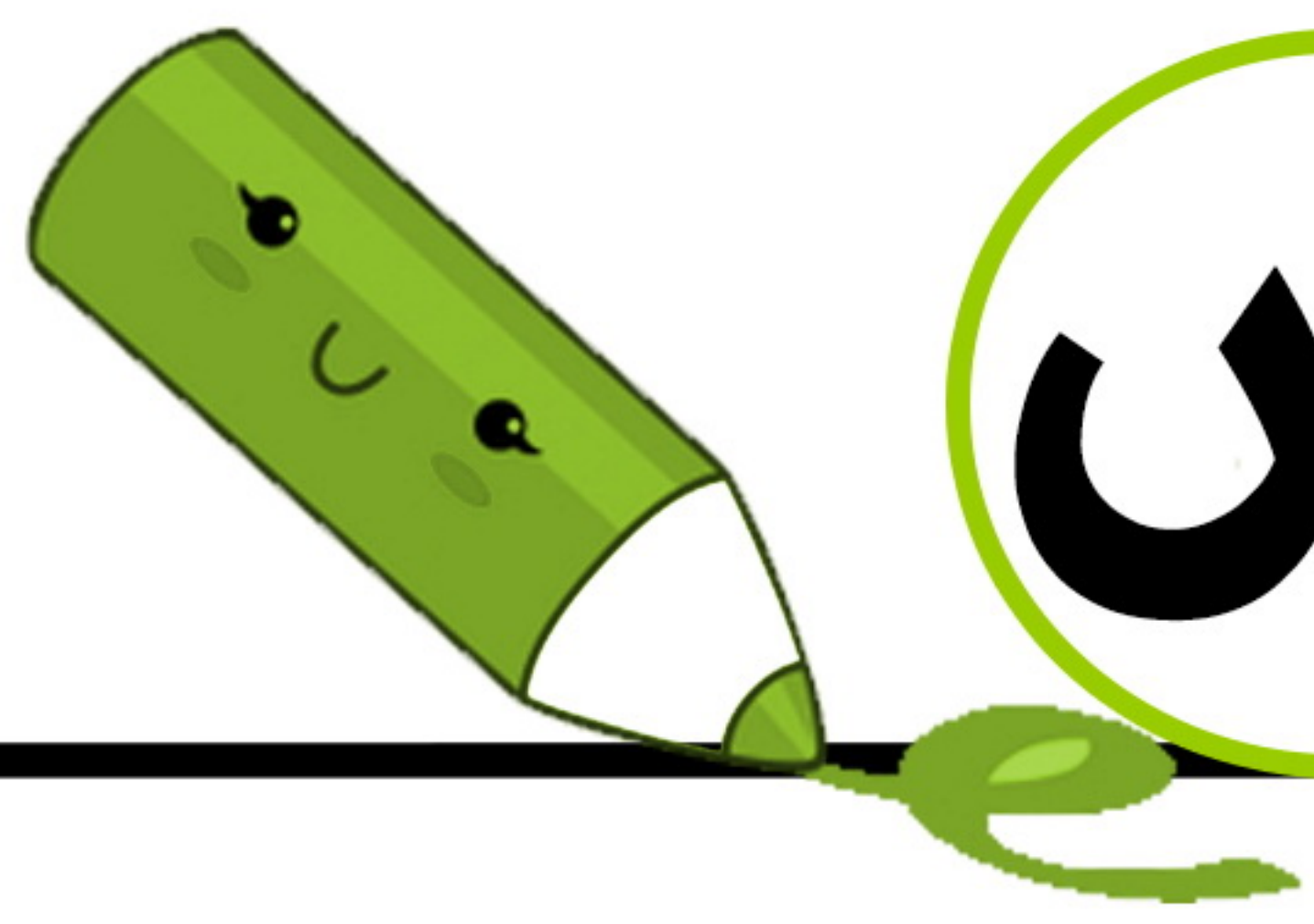
ك



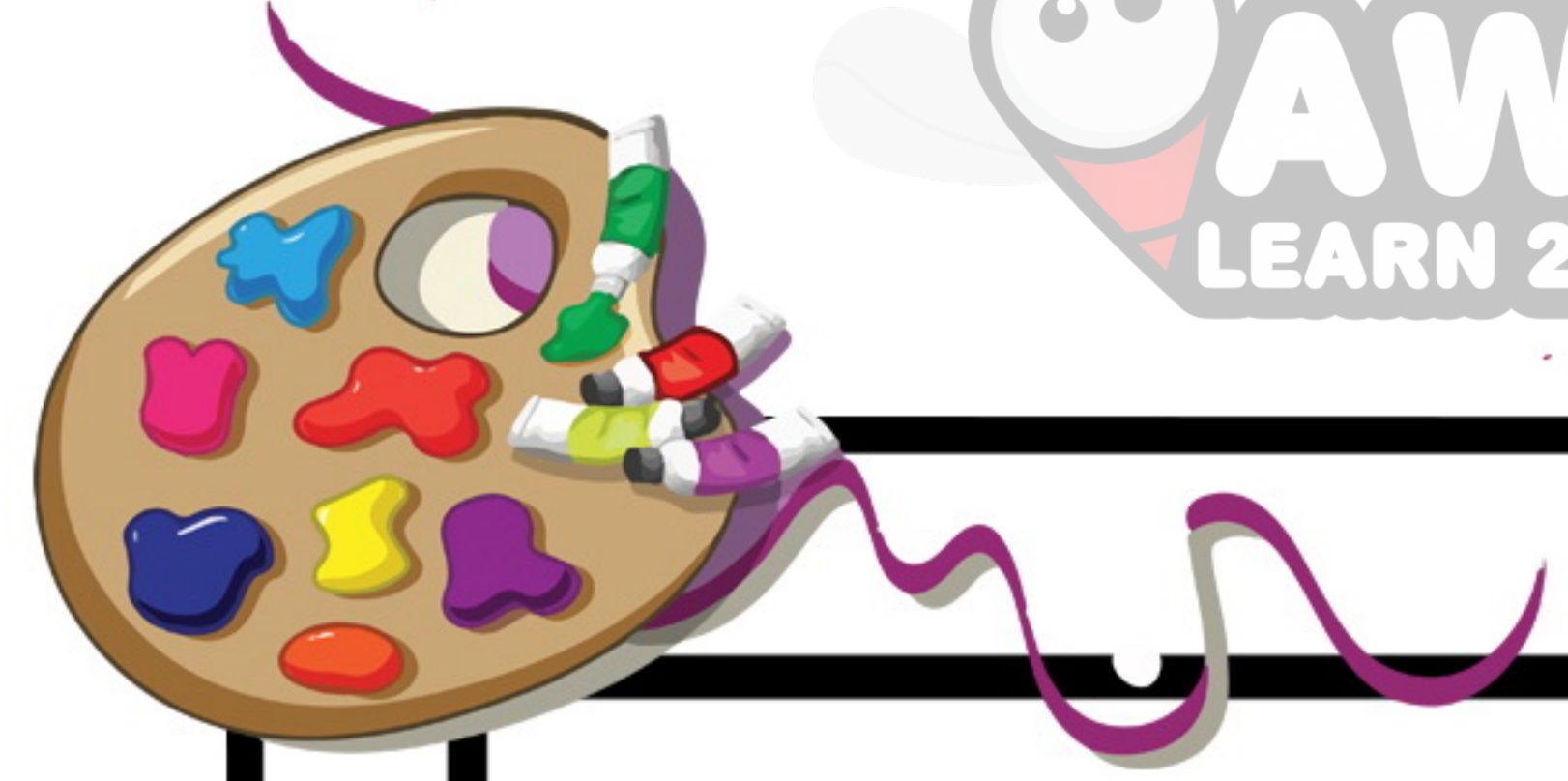


ألوان حروف

ح



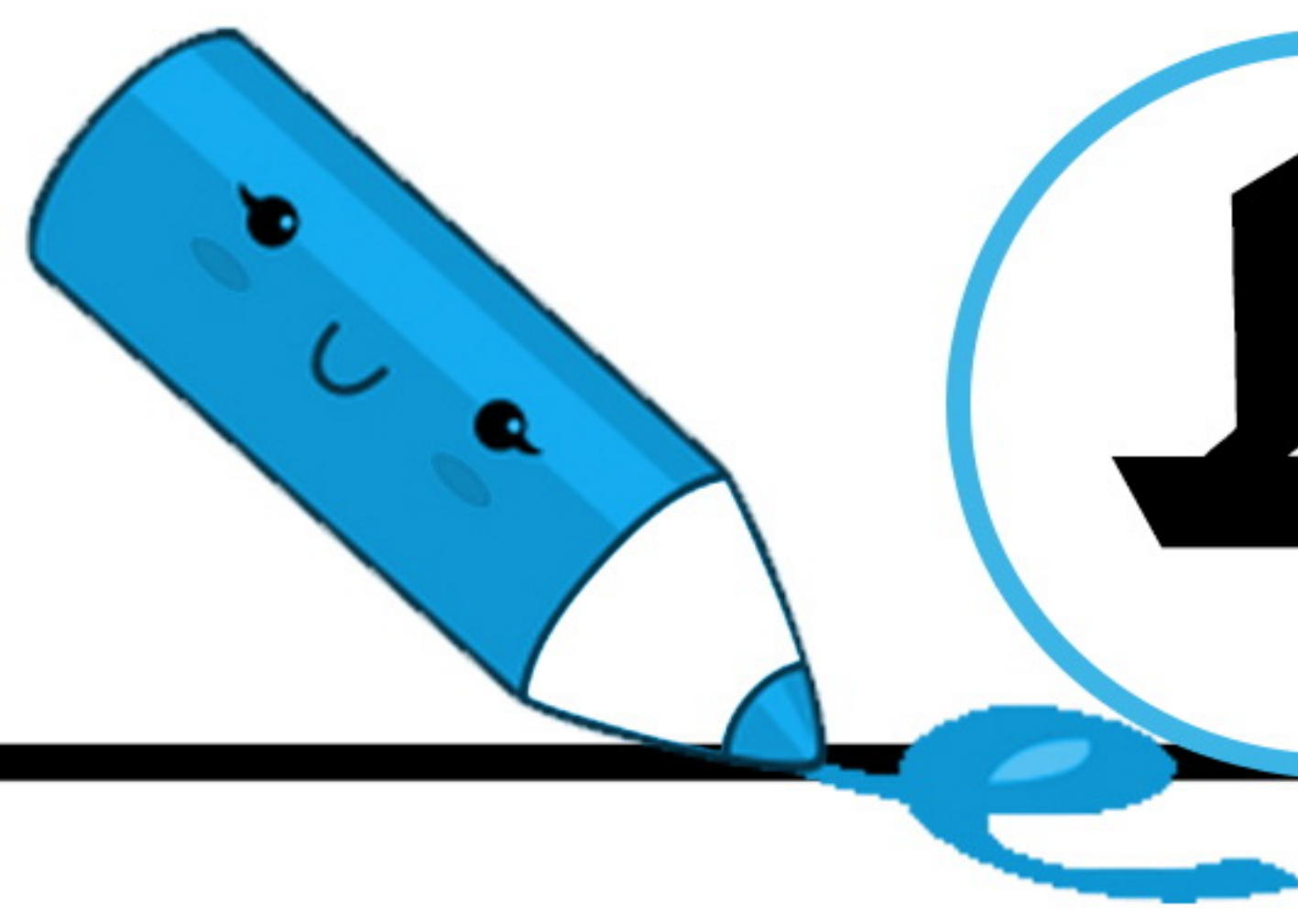
AWAZEL
LEARN 2 BE



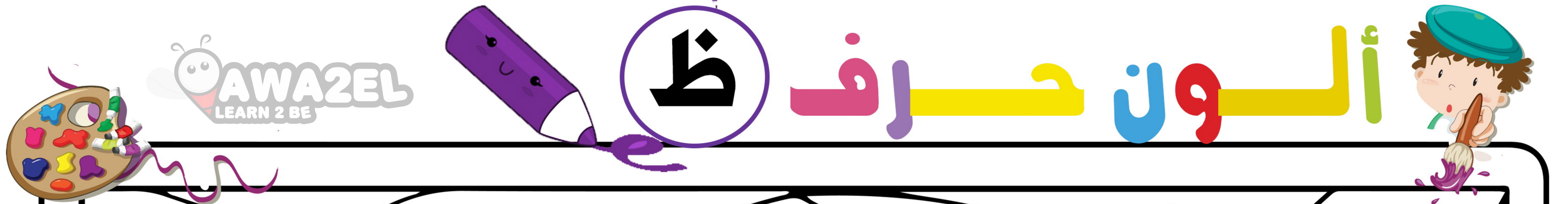
A large grid of irregular shapes containing the Arabic letter 'ح' (Ha) in various orientations and sizes for coloring. The shapes are arranged in a pattern that fills most of the page. The letter 'ح' is written in black outlines within these shapes.



ألوان حروف



A large black-and-white maze for coloring. The maze is composed of various shapes and paths. In the center of the maze, there are three circles containing the Arabic letter 'ر'. The paths of the maze are filled with the Arabic letters 'ف', 'ظ', 'ث', and 'ط'. The goal is to trace a path through the maze, starting from the top and ending at the bottom, while coloring the letters as you go.



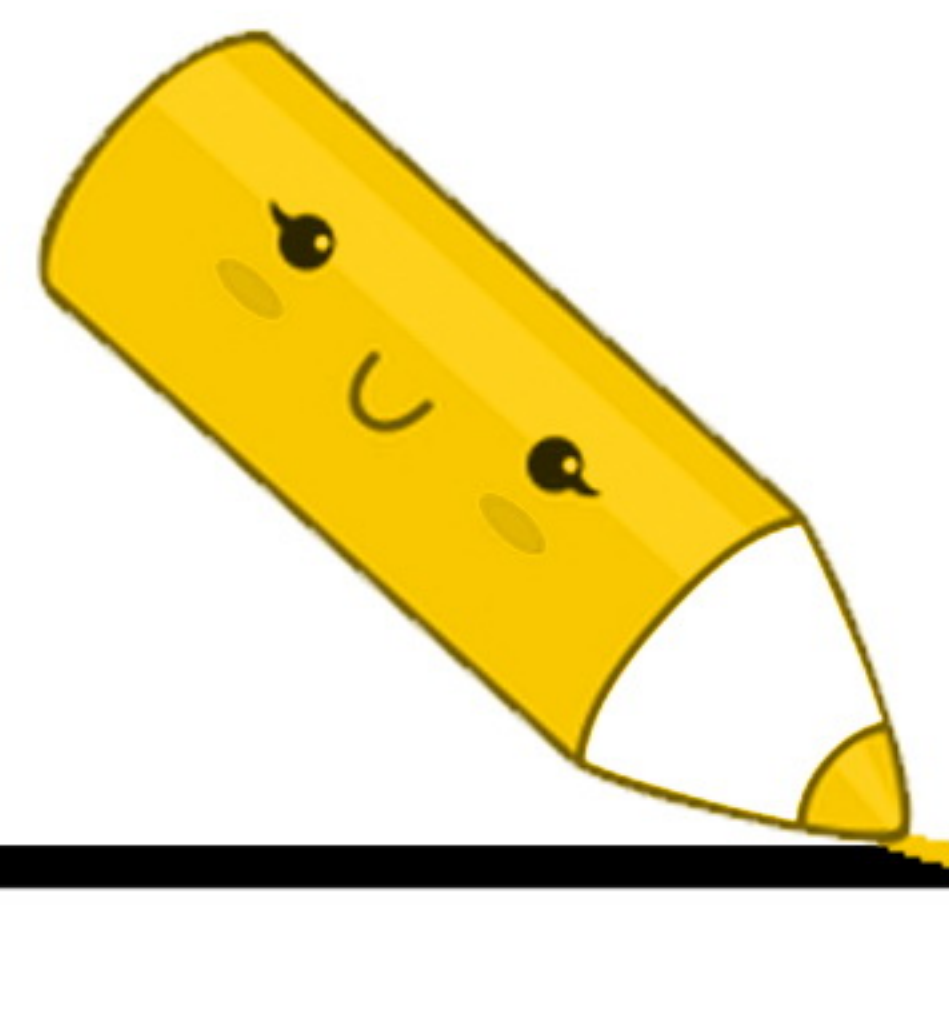
ظ

ألوان حروف

A large rectangular area containing a complex pattern of overlapping circles and lines. The pattern is filled with the Arabic letter 'ظ' (Zay) in various orientations and sizes. A thick black diagonal line runs from the bottom-left towards the top-right, crossing through the pattern.



ألوان حروف



AWAZEL
LEARN 2 BE

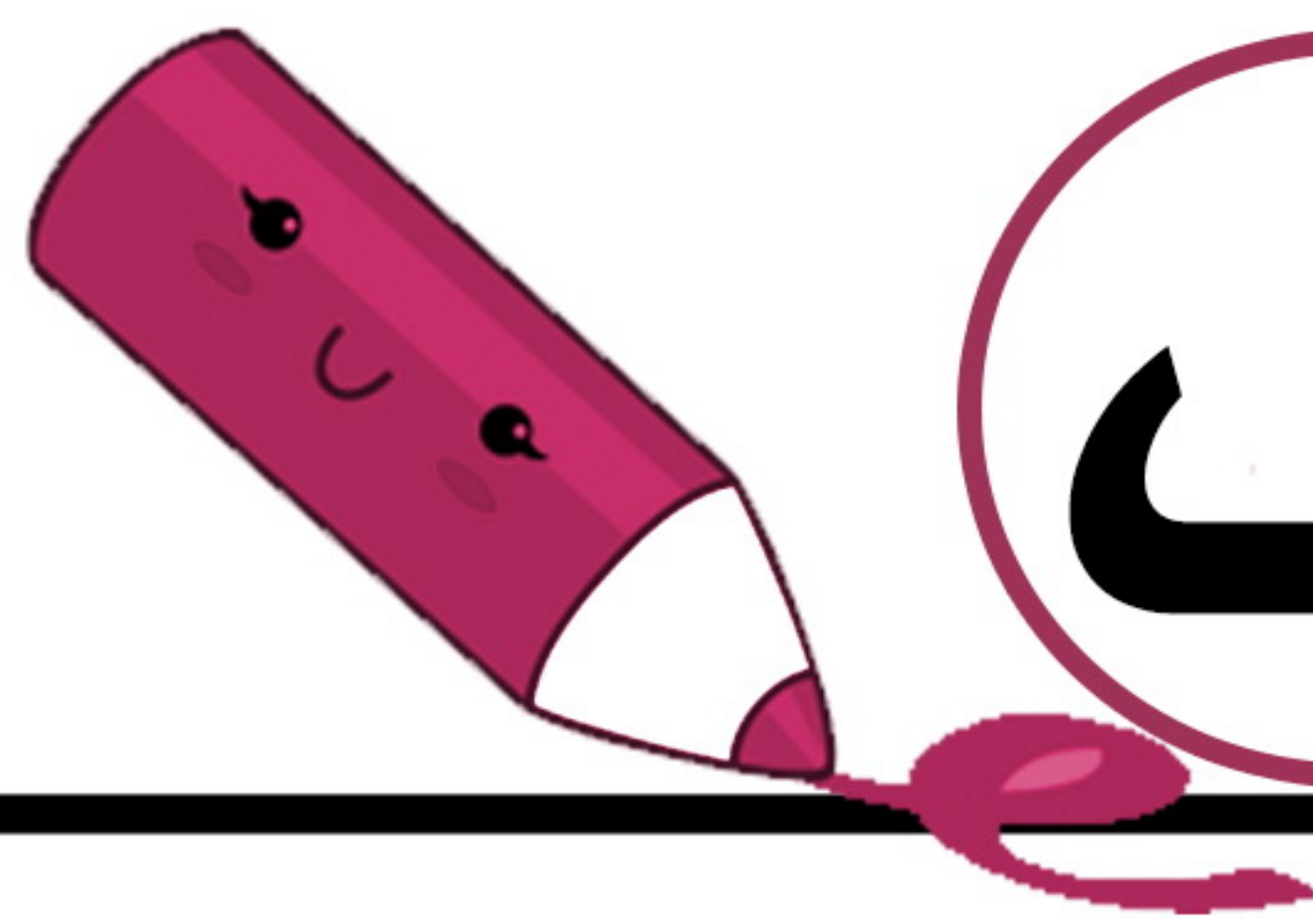


A large maze puzzle with a central eye illustration. The maze paths are formed by the letter 'ع' (Ay) in various orientations. The letters are arranged in a way that creates a complex path starting from the eye and ending at the outer boundary. The letters are black on a white background with black lines forming the maze walls.

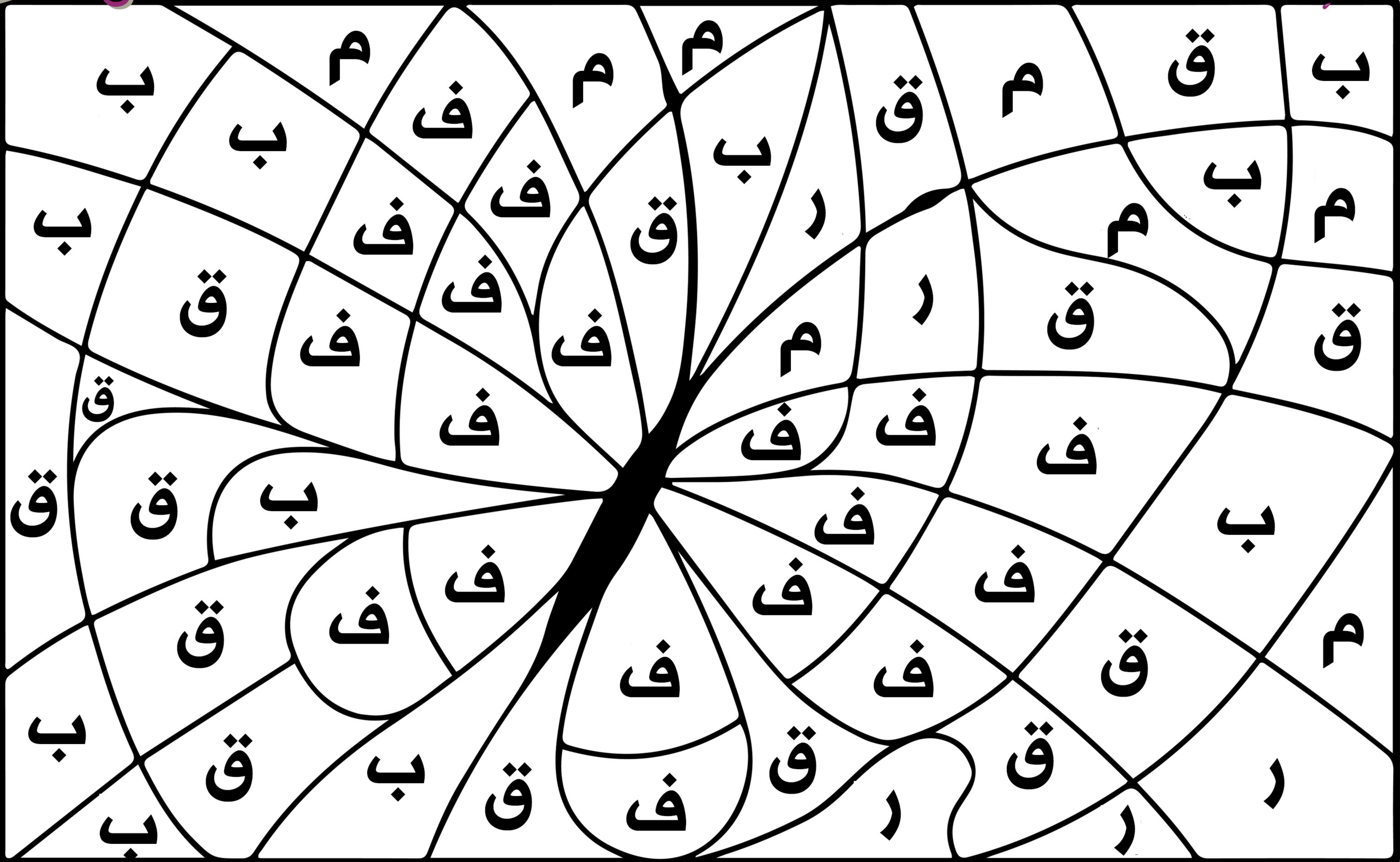


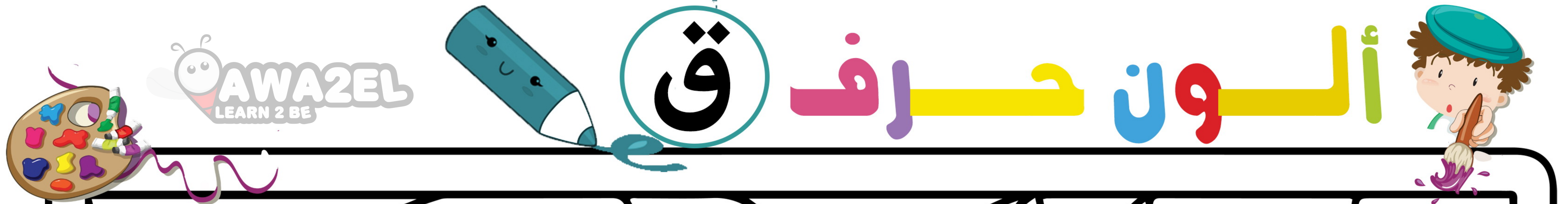
ألوان حرف

ف

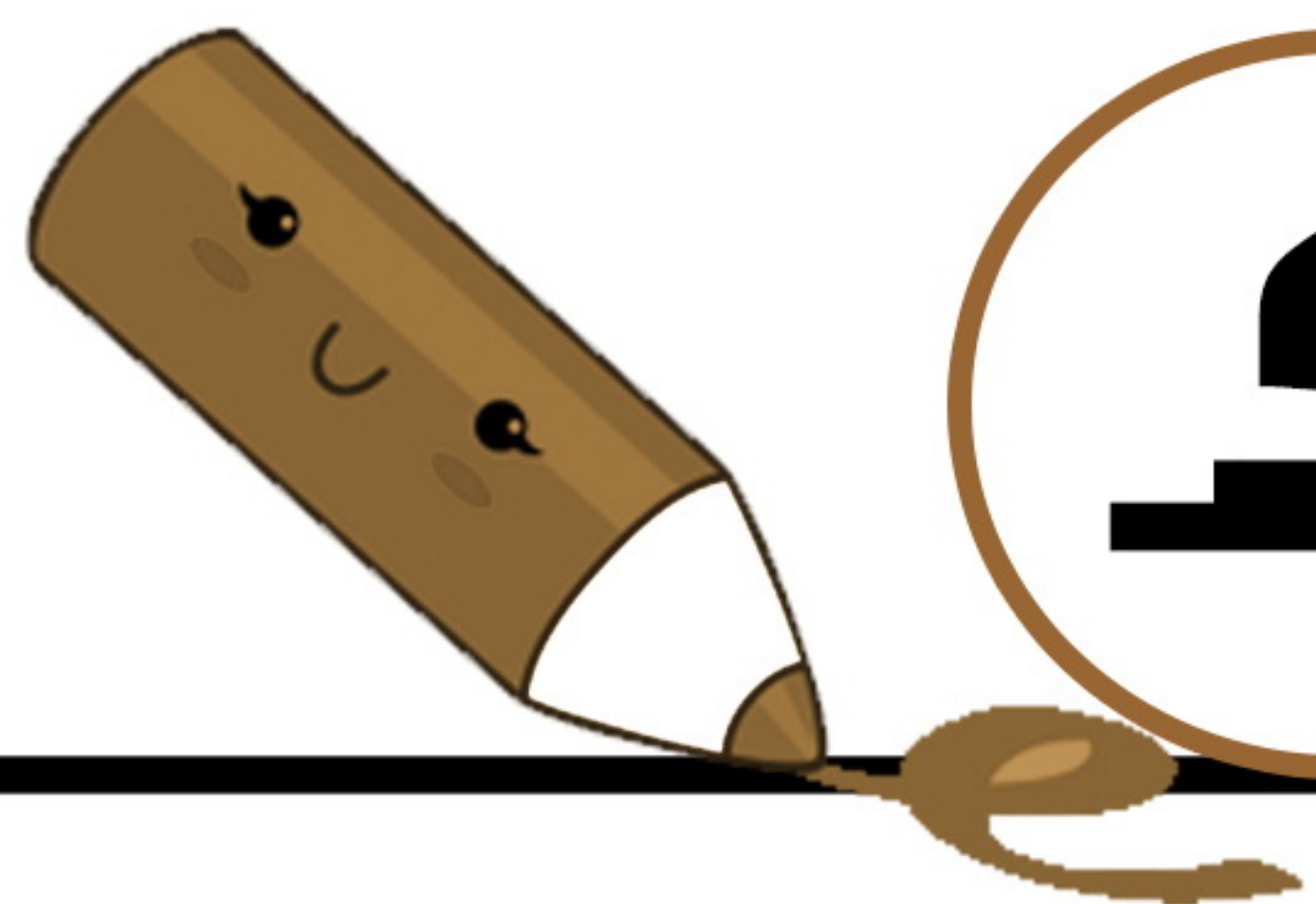


AWAZEL
LEARN 2 BE



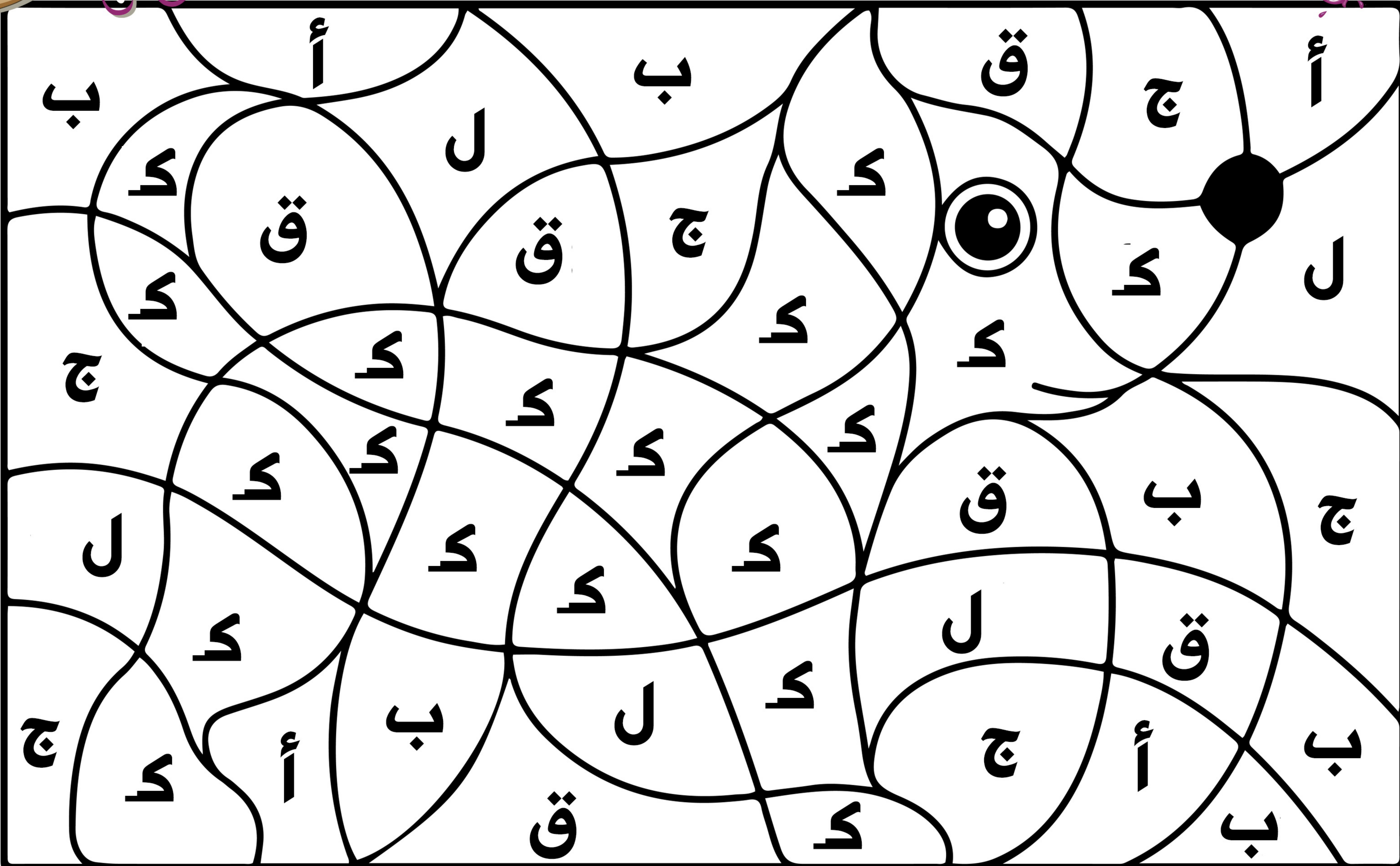


A large black-and-white illustration of a butterfly, designed as a coloring page. The butterfly's wings and body are divided into numerous irregular shapes. Each of these shapes contains a single Arabic letter. The letters are: 'ق' (Qaf), 'ف' (Fay), 'ن' (Nun), 'ت' (Ta), and 'ح' (Ha). The letters are scattered across the butterfly, with 'ق' appearing most frequently. The entire butterfly is enclosed within a simple rectangular border.



ك

ألوان حروف

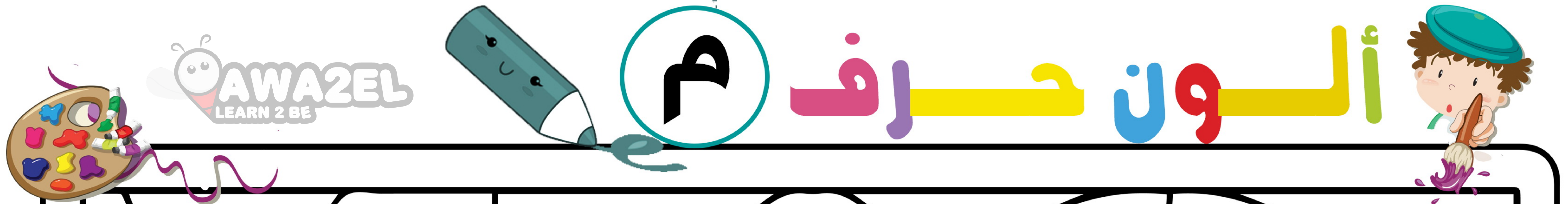




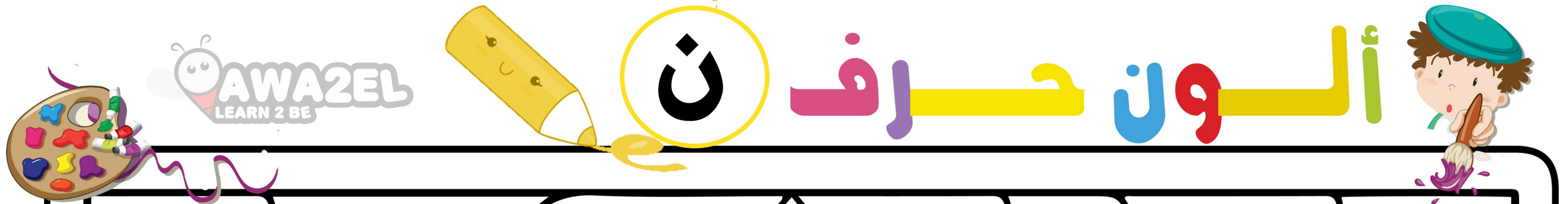
ل

ألوان حروف

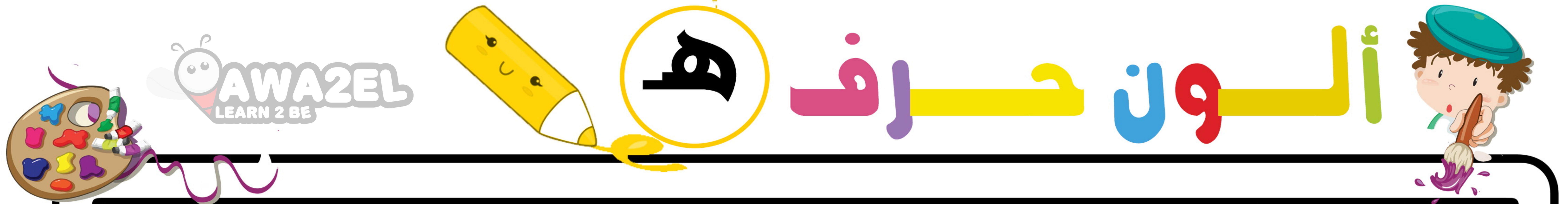
A large maze puzzle with a central cartoon character. The maze is composed of black lines forming a complex path. The Arabic letter 'ل' (Lam) is scattered throughout the maze. The central character has a large eye and a smiling mouth.



A large black-and-white maze puzzle. The maze is composed of various shapes, including circles, triangles, and irregular polygons. Inside the maze, the Arabic letter 'ح' (Ha) is scattered throughout. The letter appears in different orientations: upright, inverted, and rotated. The goal of the puzzle is to trace a path through the maze, starting from a central point and ending at a specific 'ح' letter.

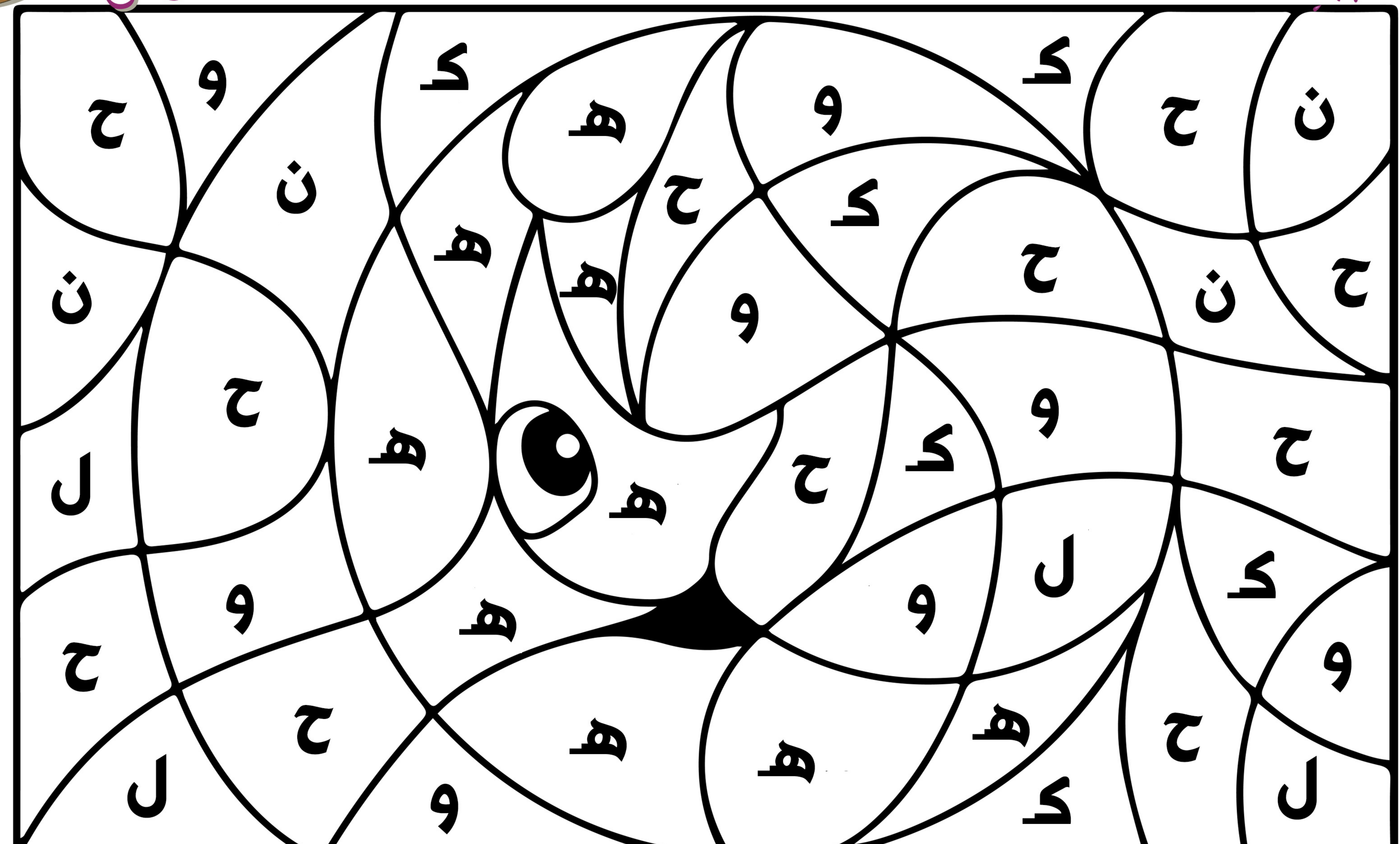


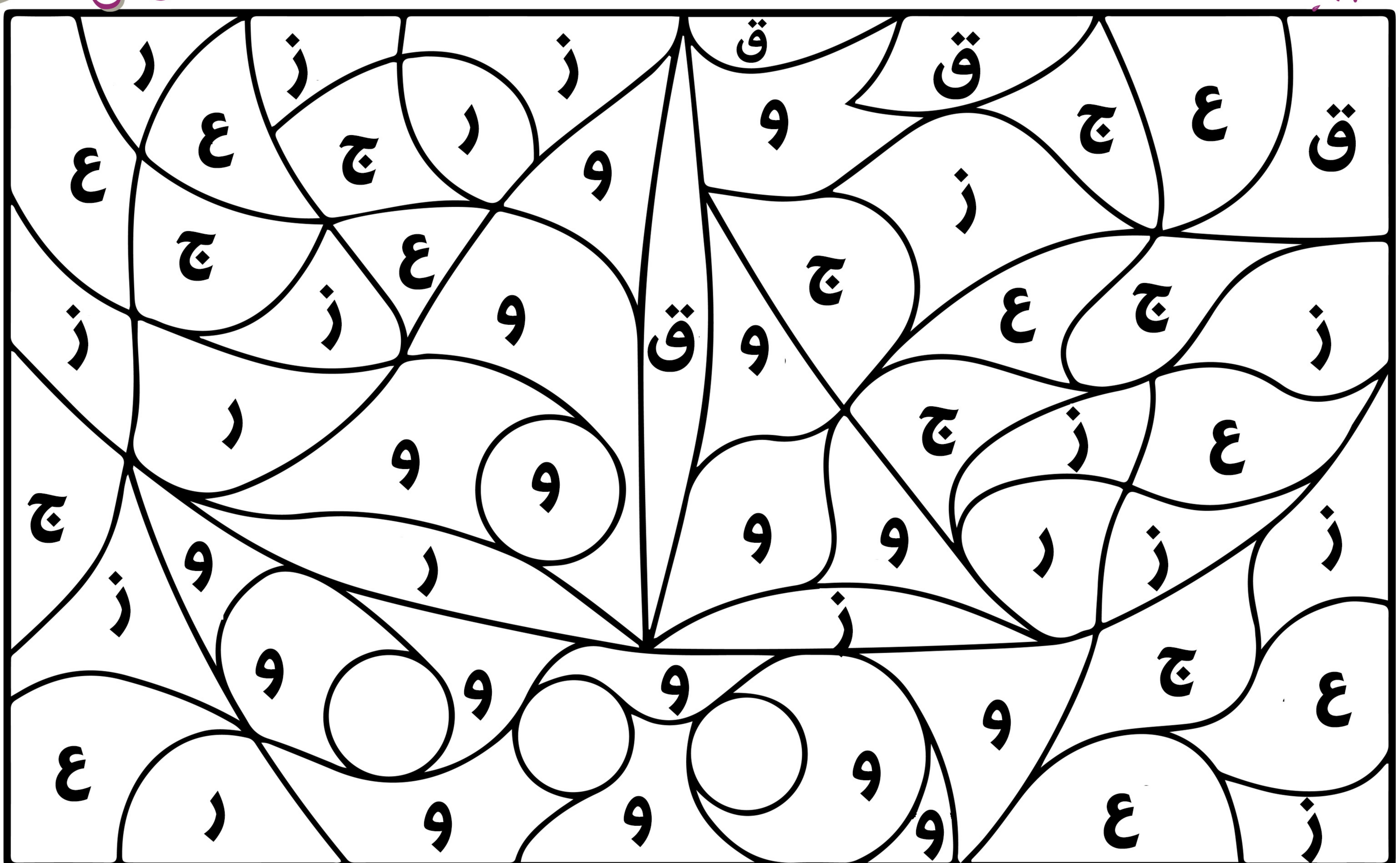
A large illustration of a smiling face with large eyes and a wide smile, divided into many irregular sections. Each section contains a single Arabic letter: 'ن', 'ز', 'ف', or 'س'. The letters are arranged in a pattern that fills the entire face, providing a coloring and letter-recognition activity.

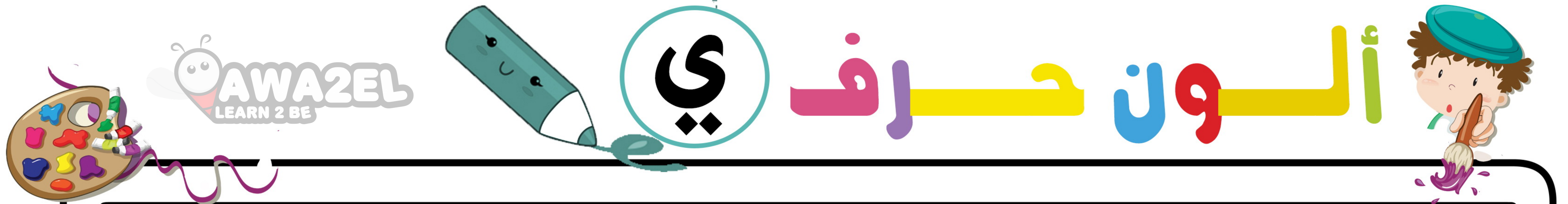


ألوان حروف

ب







ي

ألوان حروف ي

A large black-and-white illustration of a butterfly with its wings spread. The wings are filled with various Arabic letters: 'ي', 'ع', 'ن', 'ب', 'و', and 'س'. The body of the butterfly has two large circular eyes. This is a coloring page for the letter 'Ya'.